

# Softwareupdate for PMD1.0

This document describes how to update the software for PMD1.0 monitor interfaceboards over RS232. The PC Tool used for this documentation is Realterm. But any other Tool preferred by the user is also possible.

Please setup Realterm with following configurations:

Tab „Display“:      Rows: 25                              (Refer to Pic1)  
                         Activate Scrollback

Tab „Port“:            Baud 115200                              (Refer to Pic2)  
                         Select your COM Port (1 in this example but depends on your hardware environment)  
                         Parity Even  
                         8 Data Bits  
                         1 Stop Bit  
                         **Receive Xon Char 17 (very Important)**  
                         **Transmit Xoff Char 19 (very Important)**  
                         Press Button „Open“

Tab „Send“:            Ascii Line 1: Enter „gbl\_?“ (Refer to Pic3)  
                         Activate „+CR“  
                         Activate „+LF“  
                         Ascii Line 2: Enter „Loadfw?“  
                         Activate „+CR“  
                         Activate „+LF“  
                         Dump File to Port: Select the new HEX File.

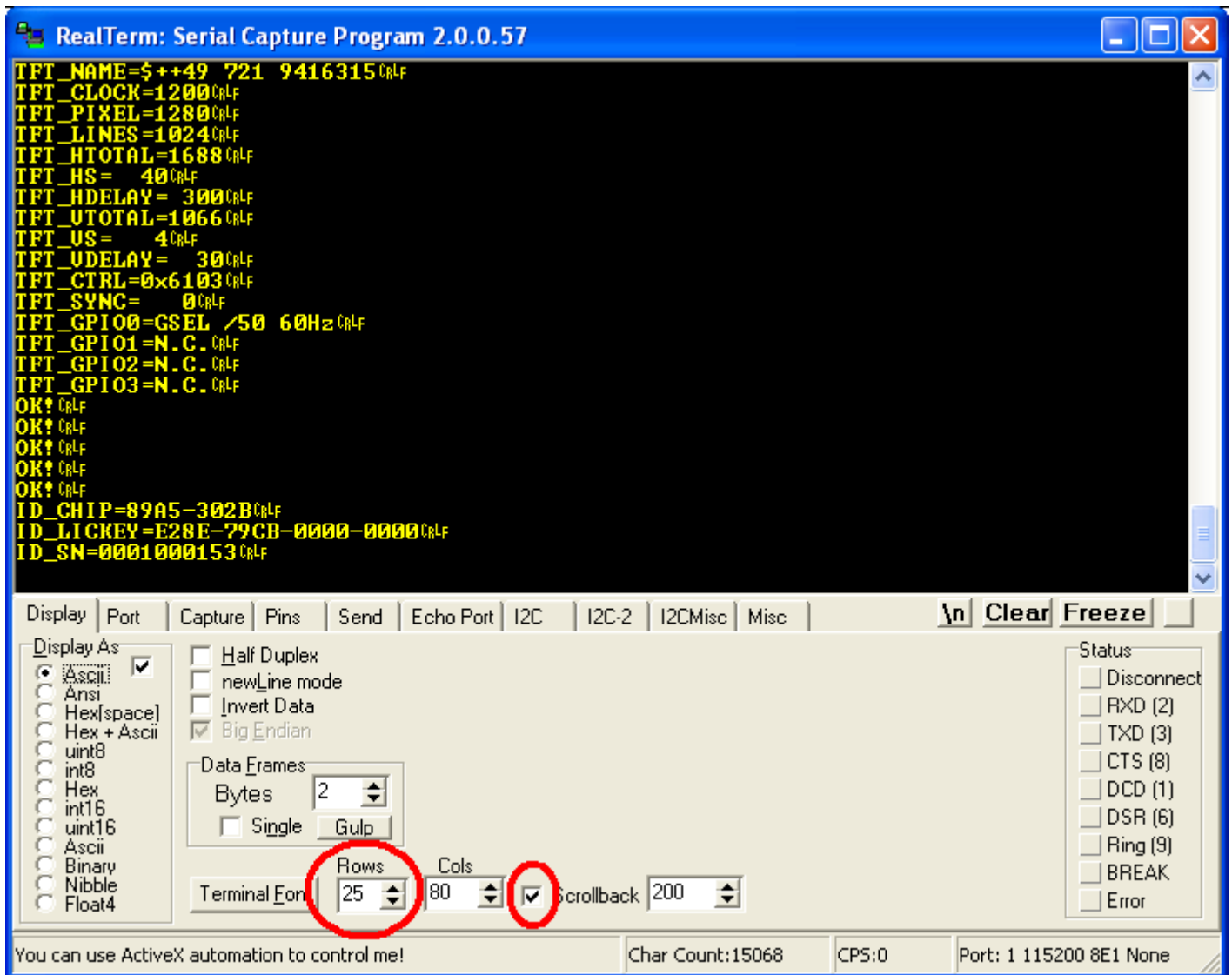
1. First of all ensure communaction is established. Press „Send ASCII“ for the first ASCII Line. Screen should look similar to pic3.
2. Press „Send ASCII“ of the 2<sup>nd</sup> ASCII Line to send the LOADFW? Command.
3. Press „Send File“ Button.

After that the screen should fill up with „FF“s. After transmitting the entire file a message occurs „... copy mirror to flash“.  
**After 30 seconds the interface could be restart by powering off and on again.**

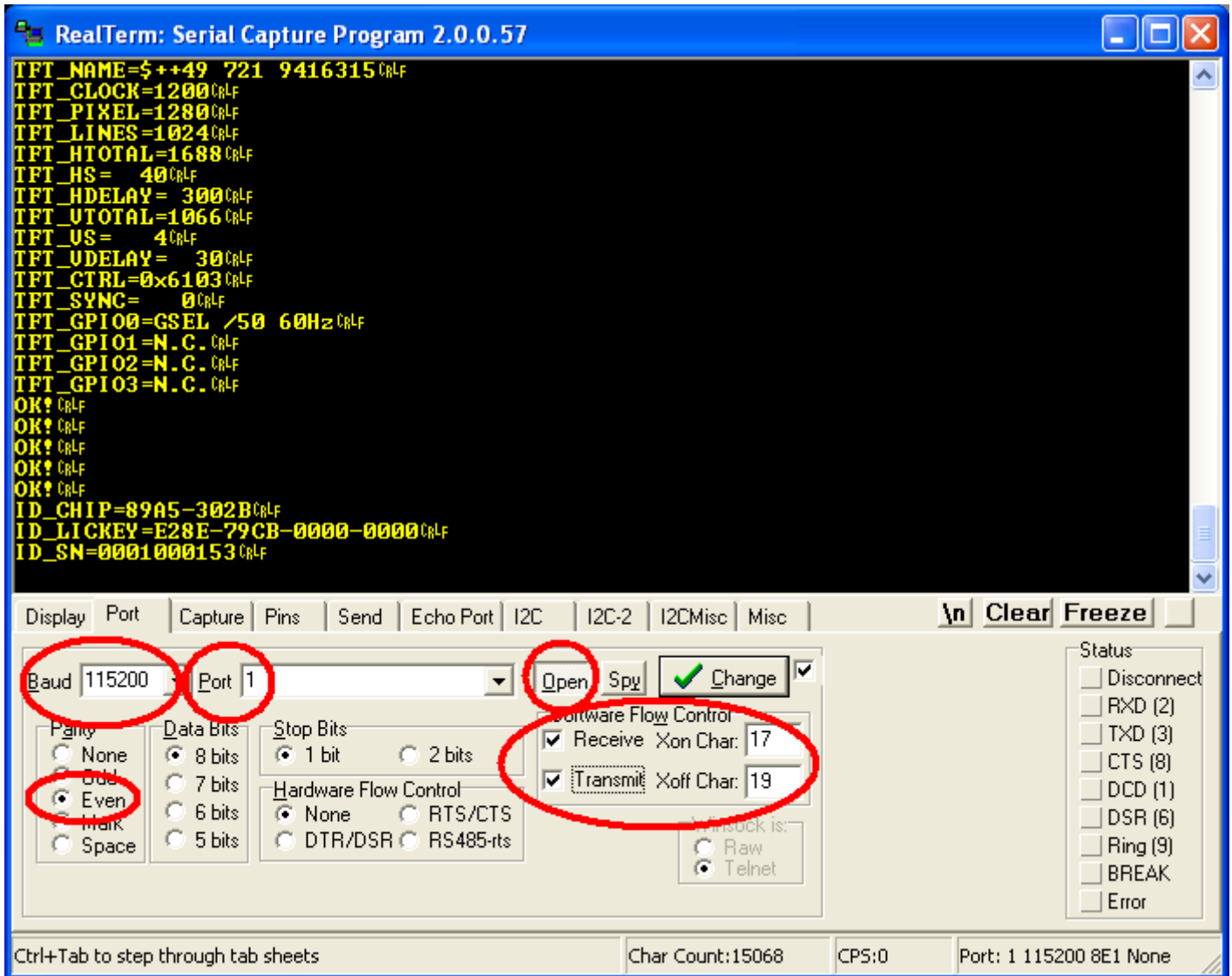
Notes:

- There is a timeout of 5 seconds after receiving the LOADFW? Command. So please don't hesitate between these two steps.
- Softwareversion from 007V7IB and later restarts on their own.
- Softwareversion before 004V7 needs to be updated with 219V7 first to update 004 or later.
- If receive Xon/transmit Xoff is not activated softwareupdate will be corrupt and interface can't restart anymore. So please be very carefull.

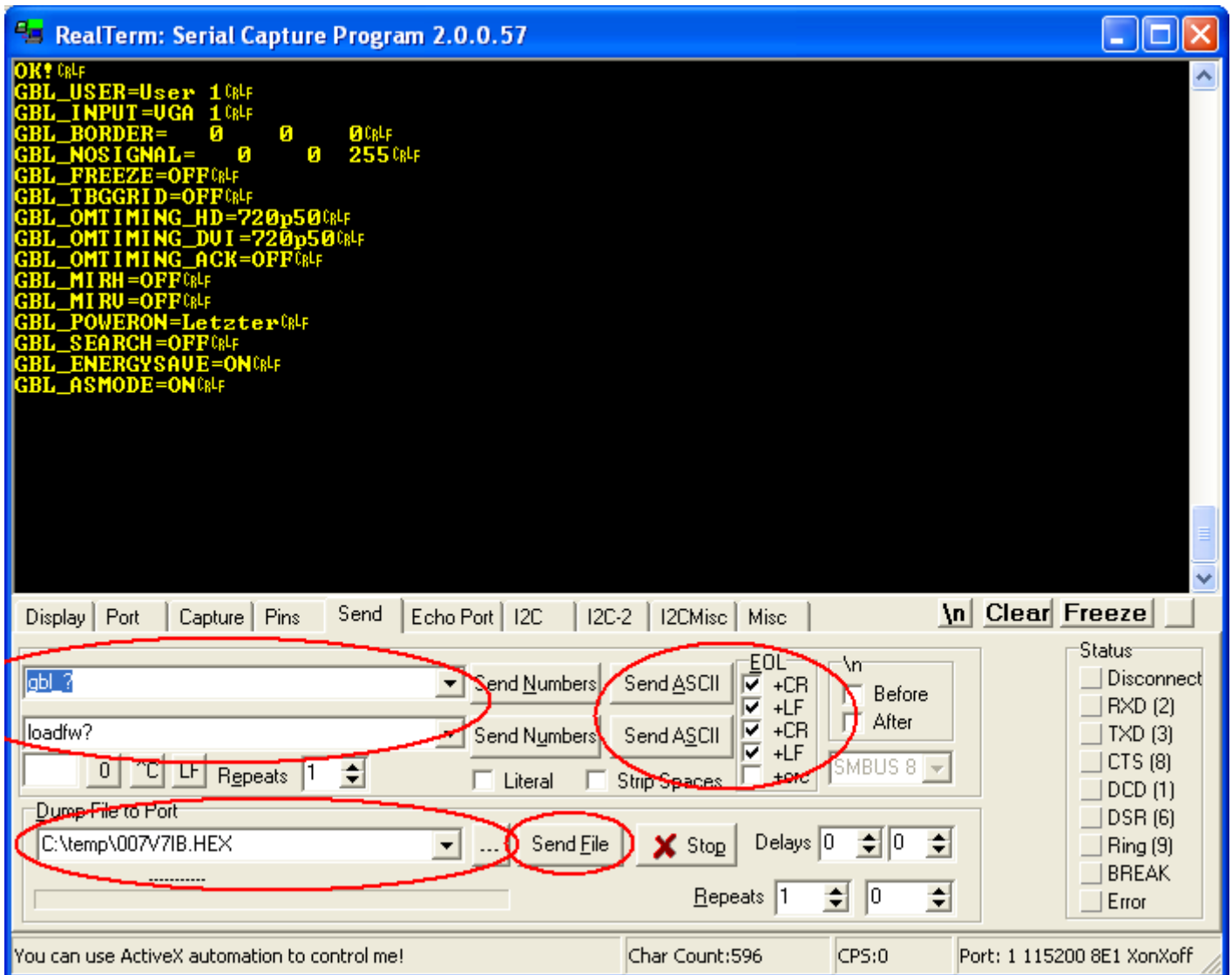
Picture 1:



Picture 2:



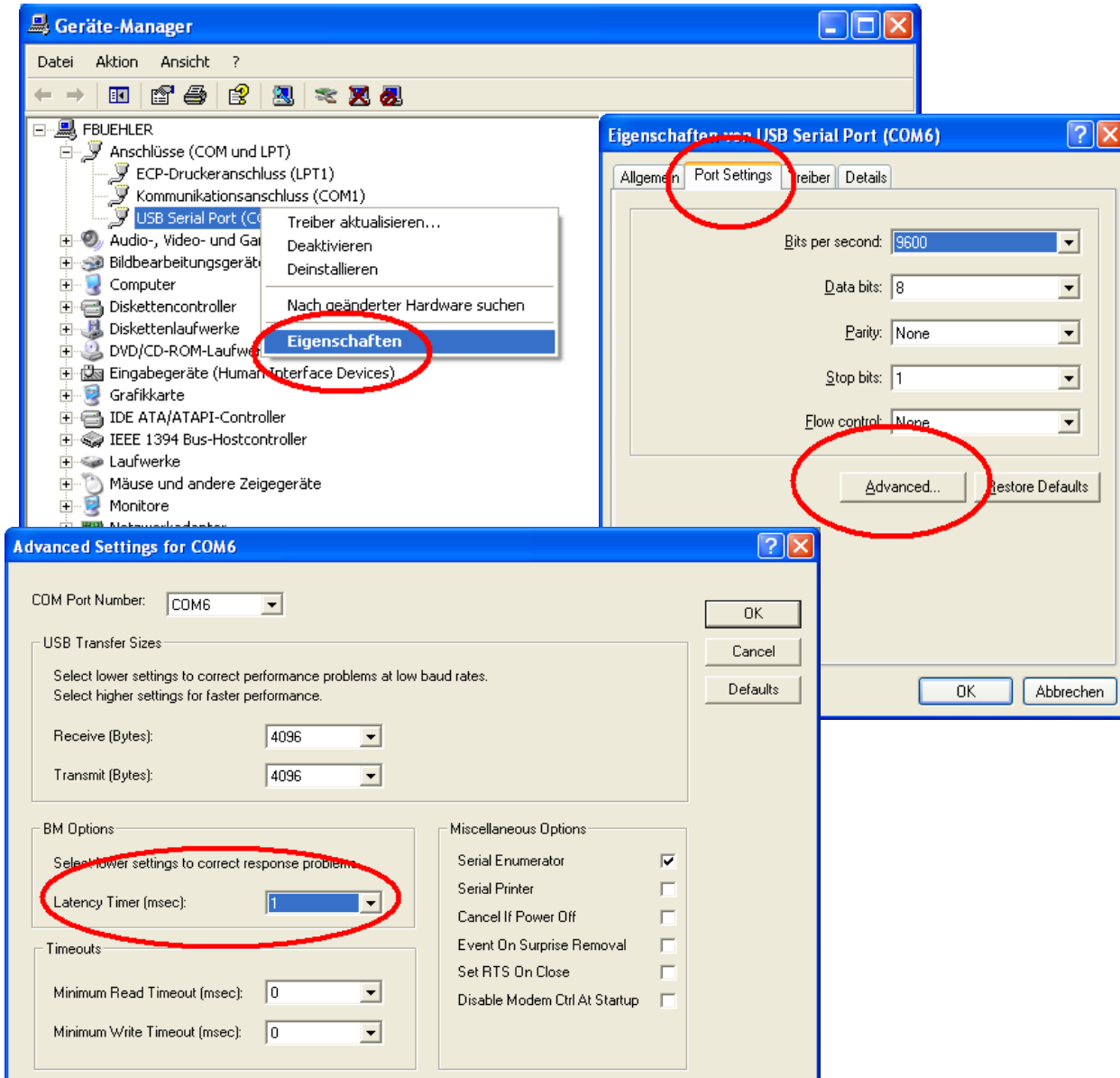
Picture 3:



Additional information:

Using an USB to RS232 converter can shorten the time needed for the update dramatically by selecting 460800 Baud. The Baudrate must be configured on both sides: Realterm and PMD (osd page 3).

To have the optimum performance the USB properties has to be set as follows:



**But nevertheless a build in RS232 interface is more reliable then USB to RS232 so we recommend to use the build in if available.**